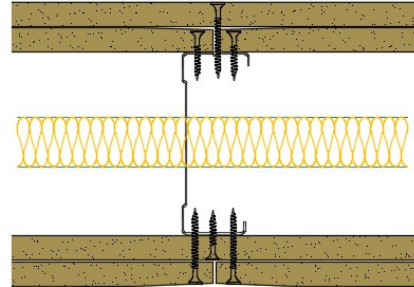


92-S-57(25) - SPEEDLINE System Data Sheet - Version V1 (24-10-23)

SPEEDLINE 92mm 'C' Stud Partition @600mm Ctrs,
with 2x Siniat GTEC 12.5mm Standard Board each
side, 25mm APR



System Performance Breakdown

Fire Resistance:

BS476 Part 22:1987:

Test Ref & Date or Applied Ref & Report:

Max Height:

Thickness:

Duty Grade: BS 5234: Part 2:1992:

Sound Insulation:

60/60 Minutes (Integrity/Insulation).

- BRE Report P102396-1011C

Refer to Speedline Specification Clause

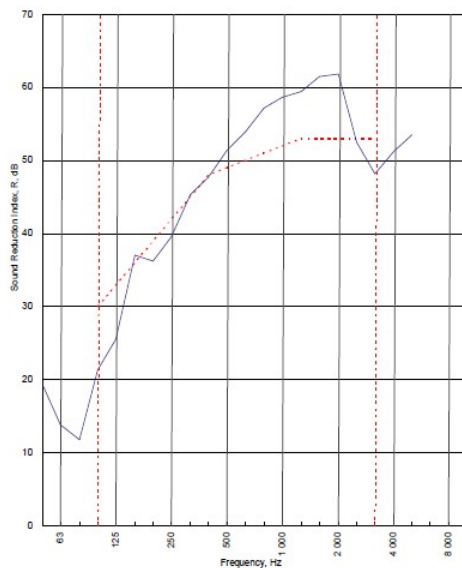
142 mm. (At Base Track, Excluding Finishes)

Severe - Annexes A-F

49 R_w dB, Date Tested or Assessed Against - 70-S-57(25)

Test Code:	H17532AA
Test Date:	12/08/2011

Freq. Hz	R dB
50	19.4
63	13.8
80	11.8
100	21.4
125	25.6
160	37.0
200	36.2
250	39.5
315	45.3
400	47.7
500	51.4
630	54.0
800	57.2
1 000	58.7
1 250	59.4
1 600	61.5
2 000	61.9
2 500	52.5
3 150	48.2
4 000	51.3
5 000	53.5
6 300	
8 000	
10 000	



Rating according to BS EN ISO 717-1:1997	R_w (C;Ctr) = 49 (-3;-10) dB		
Evaluation based on laboratory measurement results obtained by an engineering method.	Max dev. 8.6 dB at 100 Hz		
	$C_{50-150} = -7$ dB	$C_{50-500} = -7$ dB	$C_{100-500} = -2$ dB
	$C_{9,50-150} = -18$ dB	$C_{9,50-500} = -18$ dB	$C_{9,100-500} = -10$ dB

TESTED AT ONE OF THE UKAS ACCREDITED LABORATORIES BELOW

- B.T.C (H-Ref on Graph) 
- B.R.E 
- AIRO 
- S.R.L 

Customer: Metsec plc Hpec Division

BTC 17532A: Page 9 of 11



SPEEDLINE Drywall Systems, Adsetts House, 16 Europa View, Sheffield Business Park, Sheffield, S9 1XH.

Tel: 0114 231 8030.

Email: enquiries@speedlinedrywall.co.uk

(As per the requirements set out in ISO/IEC 17025:2017 regarding test data the results stated have been carried out by voestalpine Metsec plc as part of the contract to supply Speedline Metal Sections to SIG Plc)